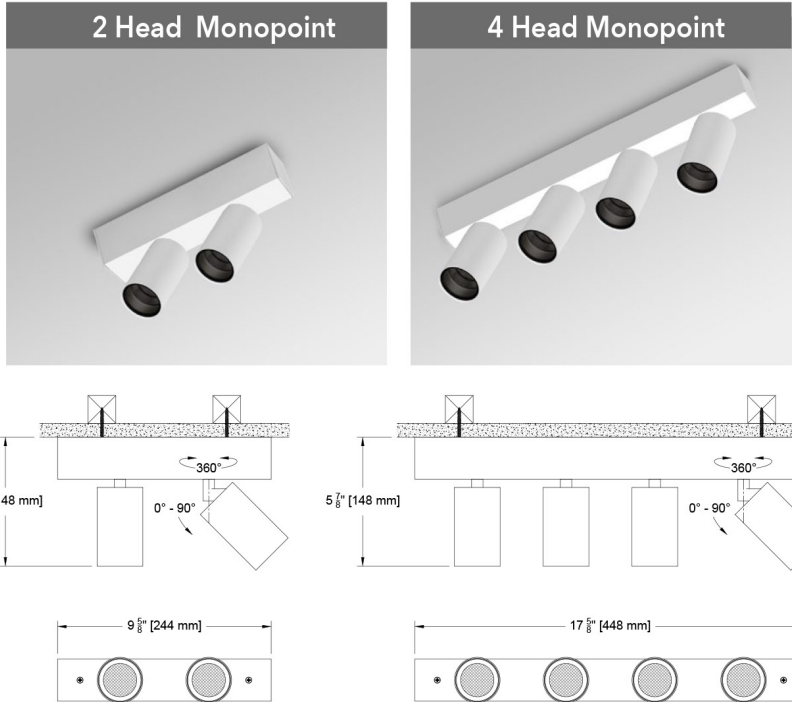


Scope Vardi 2" Multi Head Mono-point (52mm)

Formerly known as 9005
Adjustable Surface Accent Light

Scope Vardi


The Vardi is a new collection within the Scope family of 2 and 3 inch aperture fixtures. This collection is offered in a surface mount multi-head or monopoint configuration. The multi-head features 2" diameter monopoints in 2 and 4 head configurations. Each fixture provides more than 700 lumens per head yielding over 2800 lumens in the 4 point configuration. The fixture architecture allows 360° of rotation and 90° of tilt to put the light where you need. With field changeable optics, each head can be tuned to the desired distribution creating a highly versatile lighting device. The heads are attached to a surface mount bar containing an integral driver allowing for easy access service from below. You have found the Scope Vardi multi-head monopoint datasheet and hope you enjoy the details.




PROJECT: TYPE:
SPECIFIER: DATE:

Key Points (SCVB-RA)

Housing

- Surface mounted in 2 or 4 head configuration
- Extruded aluminum with bolt on end plates
- Powder paint finish with housing, stem and head color match
- Black or White as standard - contact factory is alternative finish is desired
- 2" head aperture
- Adjustable 360° degree rotation and 90° degree tilt
-  US CSA listed to UL 1598 - damp rated

Source / Optics

- 2 beam spreads - 15° and 30°
- UGR values <13 in most UGR table cells when used as a straight downlight
- Field changable optics
- Accepts 2 pieces of lamp (reflector) optical media
- Up to 748 delivered lumens from a single head
- <2 MacAdams Ellipses (<2 SDCM) for fixed white
- 2700, 3000, 3500, 4000K
- 90+ CRI, 60+ R9 Standard
-  Supports CA Title 24 Part 6 requirements to JA8

Driver And Control

- 1% dimming with 0-10
- Phase or 0-10
- Integral driver within surface mount bar
- Universal 120-277v

ROUND Beamspreads		15°				30°			
Source	System watts (W)	Delivered Lumens (lm)	Lumens/ Watt	Peak CD	10% Field	Delivered Lumens (lm)	Lumens/ Watt	Peak CD	10% Field
Citizen C9	9	707	79	6374	32°	748	84	2500	50°

Ordering Codes

PROJECT:

SPECIFIER:

DATE:

TYPE:

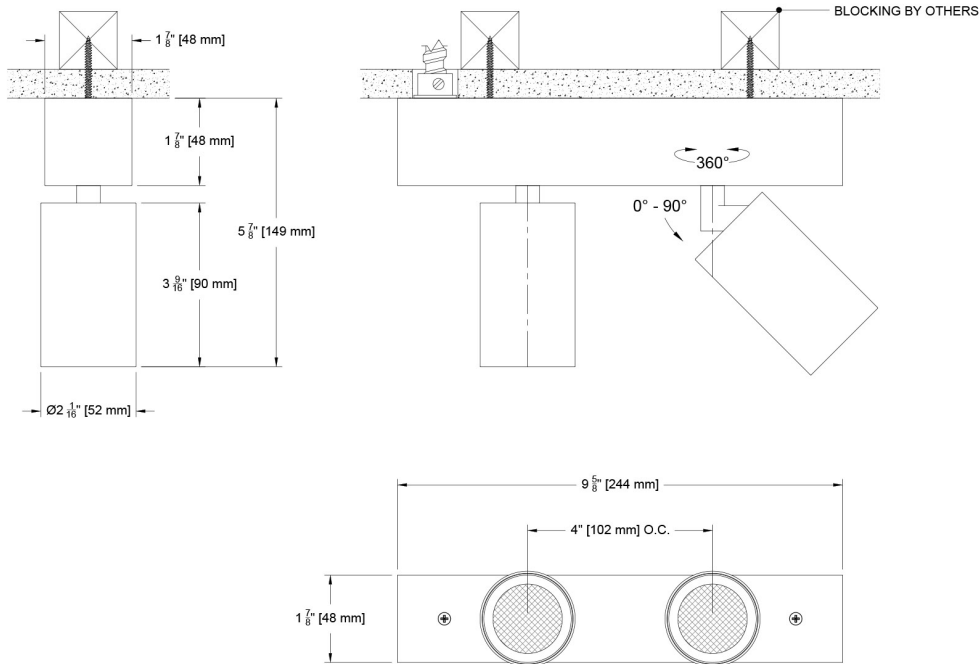
QUANTITY:

Ordering Code Example: SCVB-RA-4-SM-C9-15-30-C1-W-91L

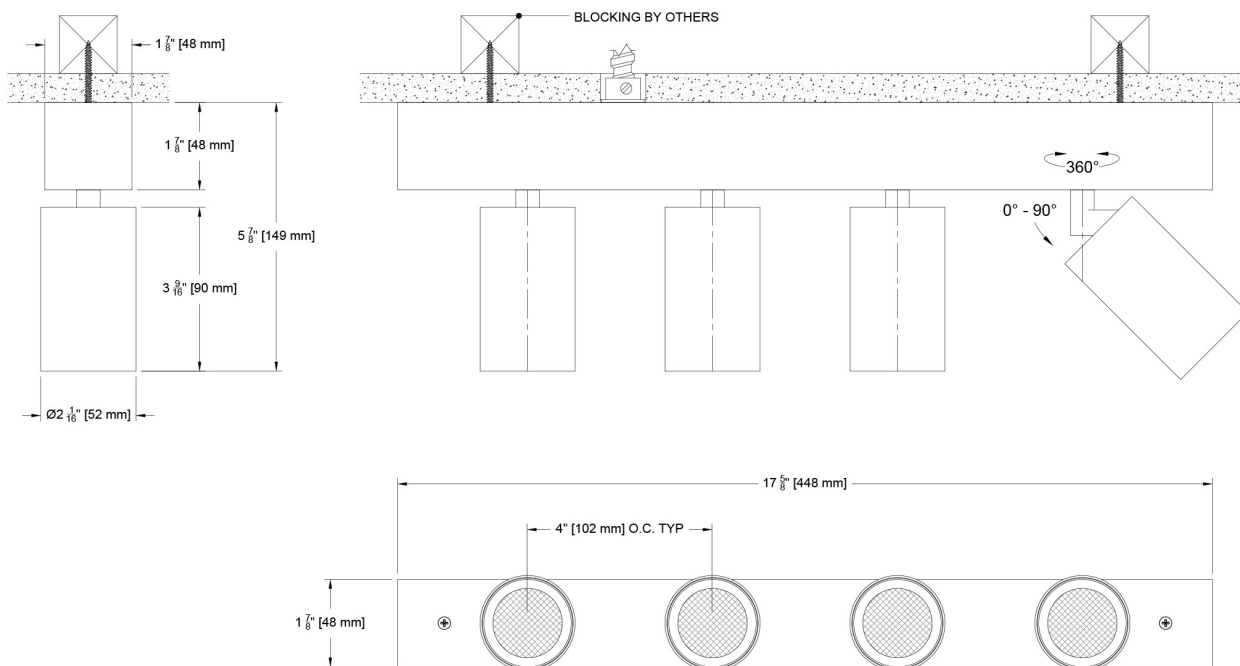
FIXTURE	HEADS	MOUNTING	SOURCE / WATTS	CCT	BEAM	DRIVER / CONTROL	HEAD FINISH	ACCESSORIES
SCVB-RA								
Scope Vardi 2" Multi Head Monopoint	2 2 head 4 4 head	SM Surface Mount* (Integral Driver)	Citizen C9 9W 707Lm* 90+CRI, 60+R9 Supports CA Title 24 part 6 compliance to JA8 requirements *Based on 15° Beam	27 2700K 30 3000K 35 3500K 40 4000K	15 Spot 30 Narrow Flood	C1 0-10^ 1.0%, UNV (120-277V) linear C2 ELV/Triac^ 1.0%, (120V) linear Note: integral driver standard	B Black Paint W White Paint FINISH GUIDE LINK	Reflector (lamp) Media 91L Solite* XXL Other Reflector (lamp) Media* 97L Black Hexcel Louver* Other STM Stem standard length 3/8" For custom size, indicate in inches Controls CA Casambi Wireless BLE to be paired with driver LENS ACCESSORY VISUAL GUIDE LINK

Ceiling Cutouts and Dimensions

2 Head Monopoint (Integral Driver) Surface Mount (SM) (SCVB-RA-2-SM-)



4 Head Monopoint (Integral Driver) Flanged Surface Mount (SM) (SCVB-RA-4-SM-)

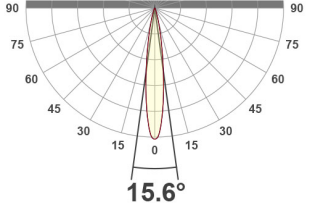
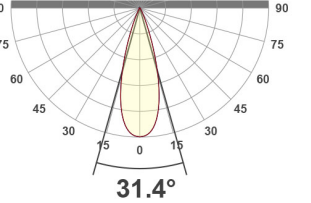


Scope Vardi 2" Multi Head Mono-point (52mm)

Formerly known as 9005
Adjustable Surface Accent Light



Photometric Table All data below are delivered lumens based on goniometer measurements of production representative product at 3000k from a SINGLE HEAD. Simulations will need to place additional head IES files 4" on center in calculation software. All lumen values can vary +/- 10% from LED manufacturer rated flux range.

ROUND Beamspreads		15°				30°			
Source	System watts (W)	Delivered Lumens (lm)	Lumens/ Watt	Peak CD	10% Field	Delivered Lumens (lm)	Lumens/ Watt	Peak CD	10% Field
Citizen C9	9	707	79	6374	32°	748	84	2500	50°
CCT Multiplier		<div>Beam angle</div>  <div>15.6°</div>				<div>Beam angle</div>  <div>31.4°</div>			
CCT	Citizen								
2700	0.95								
3000	1.00								
3500	1.02								
4000	1.03								

Color Data

All data below are delivered lumens. Color and flux information based on goniometer measurements of production representative product. All values can vary +/- 10% from LED manufacturer data range as listed on their datasheet.

Citizen Source C9

- <2 MacAdam Ellipse (<2 SDCM)
- 90+ CRI and RF
- 60+R9, Hue Bin 1

